



INFINITY RX ACCUMULATION TABLE

A PROVEN SOLUTION
TO MAXIMIZE PRODUCTION

Garvey's Infinity Rx is the best solution for handling vials and other small, unstable products. Never before has it been so easy to protect the throughput of your production lines. Garvey's Infinity Rx Series provides high-speed, low backpressure accumulation at previously impossible rates. This machine flawlessly handles products prone to instability and damage.

The Infinity was designed to meet the needs of industries with the strictest regulations. All interior surfaces can be angled in order to prevent foreign materials from collecting, and metal-to-metal surfaces have been minimized to eliminate entrapment. The system also provides complete access to all interior and exterior surfaces to allow for easy cleaning, to meet FDA standards.

Garvey's systems are designed to be as simple as possible, to ensure the highest level of reliability. With the lowest operational cost of any accumulator on the market, The Infinity keeps maximum production more affordable than ever.

Increase Efficiency

- Boost Productivity
- Maximize Line Uptime
- Keep Constraint Running
- Eliminate Backpressure

Multi-Functional

- Single File
- Lane Divide
- On Demand Flow Divide
- Stay First In First Out

Lean Manufacturing

- Lower Motor Count
- Minimize Energy Use
- Reduce Space Requirements
- Minimize Friction & Noise

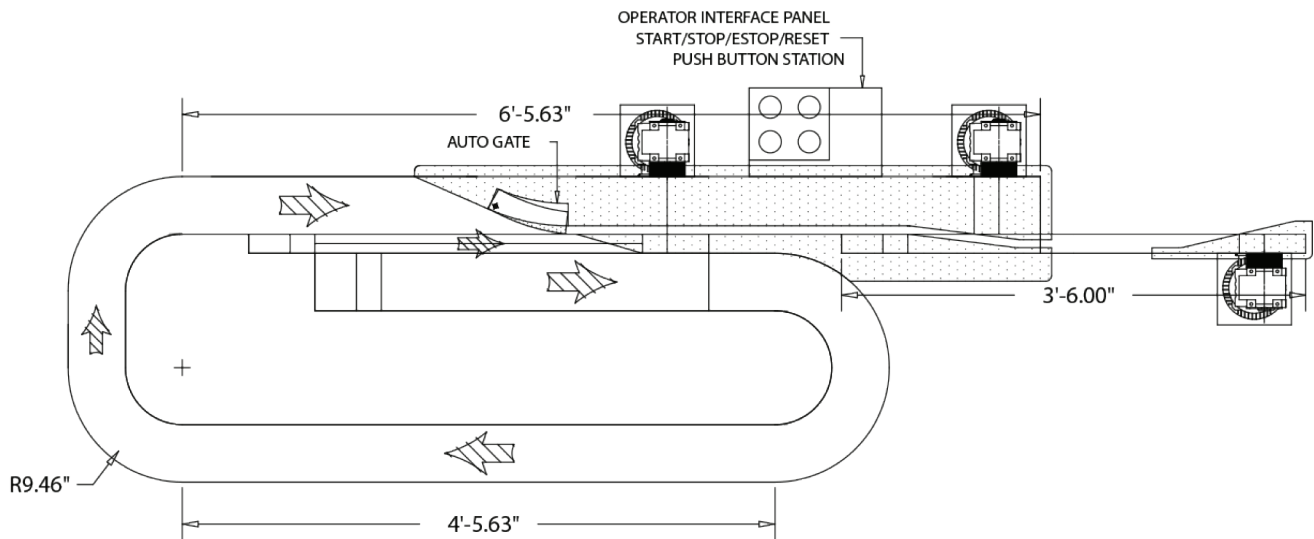
Simple Design

- Minimize Maintenance Costs
- Best Return On Investment
- Proven Industry Results
- Lowest Operation Costs

INFINITY RX ACCUMULATION TABLE

SPECIFICATIONS AND CAPABILITIES

Using our Line Analysis System, Garvey studies your line, identifies strategic locations, determines size, and tests machine rates for optimal line performance. Our tested process has consistently maximized the productivity of our customers' packaging facilities thousands of times over!



| | |
|-----------------|---|
| Series: | Infinity Rx Loop Accumulator |
| Finish: | Type 304 Stainless Steel with #4 Grainline Finish |
| Chains/Belts: | Low-Friction thermoplastic |
| Tracks: | UHMWPE with drop through design |
| Supports: | Square Pipe Leg with Articulated Foot |
| Elevation: | Adjustable |
| Guides: | Machined UHMWPE & Formed Stainless with UHMWPE Inserts |
| Guide Brackets: | Fixed Double Row on Body, Adjustable Triple Row at Exit |
| Drive Type: | D.C. Shaft or Base Mounted VariSpeed |
| Bearings: | Dodge SST Bearings |
| Controls: | Optional |
| Maintenance: | Lowest Operational Cost of any Accumulator |
| Hardware: | Standard or Metric |



www.garvey.com
208 S Route 73, Blue
Anchor, NJ 08037 USA
1-800-257-8581
sales@garvey.com